

Bayfront Parkway Central Corridor Improvements

Public Outreach – September 14, 2021



pennsylvania
DEPARTMENT OF TRANSPORTATION



ms consultants, inc.
engineers, architects, planners





Bayfront Parkway

Sassafras St Ext

State St

Holland St

Bayfront Parkway

PRELIMINARY FRONT STREET ALIGNMENT BY OTHERS

PRELIMINARY SIDEWALK IMPROVEMENTS BY OTHERS

Sassafras Street Extension

State Street

Holland Street

State St

Holland St



SCALE IN FEET
0 150 300

Bayfront Parkway Improvements
PennDOT District 1-0
September 2021

CONNECTING ERIE'S WATERFRONT
PHASE 1

OVERALL CORRIDOR
IMPROVEMENTS
INDEX



Raymond M. Blasco, MD
Memorial Library

Erie Intermodal
Transportation Center

Donjon
Shipbuilding And Repair

Greyhound
Bus Station



Holland Street
Looking East

E Front St

Holland St

Bayfront Parkway

CSX Railroad Improvements

E Front St

UPMC Hamot

Holland St

E 2nd St

LEGEND

- PROPOSED ROADWAY PAVING
- PROPOSED ROADWAY SHOULDER
- PROPOSED CONCRETE SIDEWALK
- PROPOSED CONCRETE CURB / GUTTER / ISLAND
- PROPOSED CONCRETE BARRIER / RETAINING WALL
- PROPOSED TRUCK APRON
- PROPOSED DRIVEWAY ADJUSTMENT
- PROPOSED LANDSCAPED AREA
- PROPOSED PEDESTRIAN BRIDGE
- EXISTING SIDEWALK & BICYCLE PATH



Bayfront Parkway Improvements
PennDOT District 1-0
September 2021
CONNECTING ERIE'S WATERFRONT
PHASE 1

**HOLLAND STREET
IMPROVEMENTS**





Grade Separated Intersection
(Bayfront Parkway Through Traffic
Passes Below State Street)

Presque Isle Yacht Club

Wolverine Park
Marina

State St

PRELIMINARY FRONT STREET
ALIGNMENT BY OTHERS

Front St

100 Peach Street

Peach St

100 State Street

W 2nd St

State St

UPMC Hamot

LEGEND

	PROPOSED ROADWAY PAVING
	PROPOSED ROADWAY SHOULDER
	PROPOSED CONCRETE SIDEWALK
	PROPOSED CONCRETE CURB GUTTER / ISLAND
	PROPOSED CONCRETE BARRIER / RETAINING WALL
	PROPOSED TRUCK APRON
	PROPOSED DRIVEWAY ADJUSTMENT
	PROPOSED LANDSCAPED AREA
	PROPOSED PEDESTRIAN BRIDGE
	EXISTING SIDEWALK & BICYCLE PATH

SCALE IN FEET
0 50 100

Bayfront Parkway Improvements
PennDOT District 1-0
September 2021
CONNECTING ERIE'S WATERFRONT
PHASE 1

STATE STREET
IMPROVEMENTS





Sassafra Street Ext
Looking West



Bayfront Convention Center

Sassafra St Ext

Sassafra Pier

Front St

PRELIMINARY FRONT STREET
ALIGNMENT BY OTHERS

Bayfront Parkway

PRELIMINARY SIDEWALK
IMPROVEMENTS BY OTHERS

Sassafra St

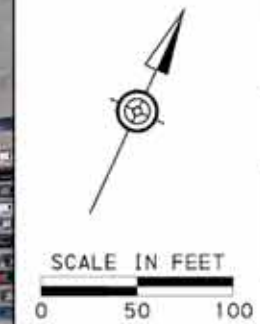
W Front St

Myrtle St

Sasafra St

Short St

- LEGEND**
- PROPOSED ROADWAY PAVING
 - PROPOSED ROADWAY SHOULDER
 - PROPOSED CONCRETE SIDEWALK
 - PROPOSED CONCRETE CURB GUTTER / ISLAND
 - PROPOSED CONCRETE BARRIER / RETAINING WALL
 - PROPOSED TRUCK APRON
 - PROPOSED DRIVEWAY ADJUSTMENT
 - PROPOSED LANDSCAPED AREA
 - PROPOSED PEDESTRIAN BRIDGE
 - EXISTING SIDEWALK & BICYCLE PATH



Bayfront Parkway Improvements
PennDOT District 1-0
September 2021
CONNECTING ERIE'S WATERFRONT
PHASE 1

**SASSAFRA STREET
IMPROVEMENTS**





Peer Review Summary

What is a peer review?

A peer review is an internal process where one consultant (peer) reviews the design work of the primary consultant to look for possible adjustments or enhancements to the design. Based on conversations with the City of Erie, its council and the public, it was determined the proposed roundabouts and pedestrian bridge would undergo a peer review to ensure the best results to meet the purpose and need of the project and the safety of all users.

Roundabouts



- Performed by Kittelson & Associates, Inc.
- Goals:
 - ◇ Enhance Pedestrian and Driver Safety
 - ◇ Improve Roundabout Geometry
 - ◇ Efficiently Move Traffic through Intersections
 - ◇ Reduce Vehicle Speeds for Improved Pedestrian and Bicycle Safety
 - ◇ Improve Signing and Wayfinding

Holland Pedestrian Bridge



- Performed by TY Lin International
- Goals:
 - ◇ Enhance Pedestrian Experience and Safety
 - ◇ Maximize Efficiency of Bridge Geometry
 - ◇ Use Economically Friendly Materials and Layout
 - ◇ Create a Maintenance-Friendly Structure
 - ◇ Develop Alternative Structure Concepts





Peer Review: Roundabouts

Previous Design

Current Design

Sassafras Street Ext



Holland Street



Enhancements

- Reduced Southbound Approaches to Single Lane
- Reduced Pedestrian Crossing Distances
- Added Raised Crosswalks
- Improved Intersection Geometry & Adjusted Radii
- Improved Signing and Wayfinding





Peer Review: Holland Street Pedestrian Bridge

BAYFRONT PARKWAY
CENTRAL CORRIDOR IMPROVEMENTS

CITY OF ERIE, PA

Holland Street Pedestrian Bridge Concepts

1 – Steel Girder



Construction Cost \$3.6M
Annual Maintenance Cost \$40k-\$53k

2 – Steel Truss



Construction Cost \$3.8M
Annual Maintenance Cost \$42k-\$56k

3—Concrete Girder



Construction Cost \$2.7M
Annual Maintenance Cost \$24k-32k

4 – Terrace Arch



Construction Cost \$5.7M
Annual Maintenance Cost \$38k-\$52k

5 – Terrace Girder



Construction Cost \$4.0M
Annual Maintenance Cost \$27k-\$36k

6 – Cable Stay



Construction Cost \$6.4M
Annual Maintenance Cost \$36k-\$49k





Peer Review: Holland Street Pedestrian Bridge

BAYFRONT PARKWAY
CENTRAL CORRIDOR IMPROVEMENTS

CITY OF ERIE, PA

Concept 1 - Steel Girder

Construction Cost \$3.6M

Annual Maintenance Cost \$40k-\$53k





Peer Review: Holland Street Pedestrian Bridge

BAYFRONT PARKWAY
CENTRAL CORRIDOR IMPROVEMENTS

CITY OF ERIE, PA

Concept 1 - Steel Girder

Construction Cost \$3.6M

Annual Maintenance Cost \$40k-\$53k





Peer Review: Holland Street Pedestrian Bridge

BAYFRONT PARKWAY
CENTRAL CORRIDOR IMPROVEMENTS

CITY OF ERIE, PA

Concept 1 - Steel Girder

Construction Cost \$3.6M

Annual Maintenance Cost \$40k-\$53k





Peer Review: Holland Street Pedestrian Bridge

BAYFRONT PARKWAY
CENTRAL CORRIDOR IMPROVEMENTS

CITY OF ERIE, PA

Concept 2 - Steel Truss

Construction Cost \$3.8M

Annual Maintenance Cost \$42k-\$56k





Peer Review: Holland Street Pedestrian Bridge

BAYFRONT PARKWAY
CENTRAL CORRIDOR IMPROVEMENTS

CITY OF ERIE, PA

Concept 2 - Steel Truss

Construction Cost \$3.8M

Annual Maintenance Cost \$42k-\$56k





Peer Review: Holland Street Pedestrian Bridge

BAYFRONT PARKWAY
CENTRAL CORRIDOR IMPROVEMENTS

CITY OF ERIE, PA

Concept 2 - Steel Truss

Construction Cost \$3.8M

Annual Maintenance Cost \$42k-\$56k





Peer Review: Holland Street Pedestrian Bridge

BAYFRONT PARKWAY
CENTRAL CORRIDOR IMPROVEMENTS

CITY OF ERIE, PA

Concept 3 - Concrete Girder

Construction Cost \$2.7M

Annual Maintenance Cost \$24k-\$32k





Peer Review: Holland Street Pedestrian Bridge

BAYFRONT PARKWAY
CENTRAL CORRIDOR IMPROVEMENTS

CITY OF ERIE, PA

Concept 3 - Concrete Girder

Construction Cost \$2.7M

Annual Maintenance Cost \$24k-\$32k





Peer Review: Holland Street Pedestrian Bridge

BAYFRONT PARKWAY
CENTRAL CORRIDOR IMPROVEMENTS

CITY OF ERIE, PA

Concept 3 - Concrete Girder

Construction Cost \$2.7M

Annual Maintenance Cost \$24k-\$32k





Peer Review: Holland Street Pedestrian Bridge

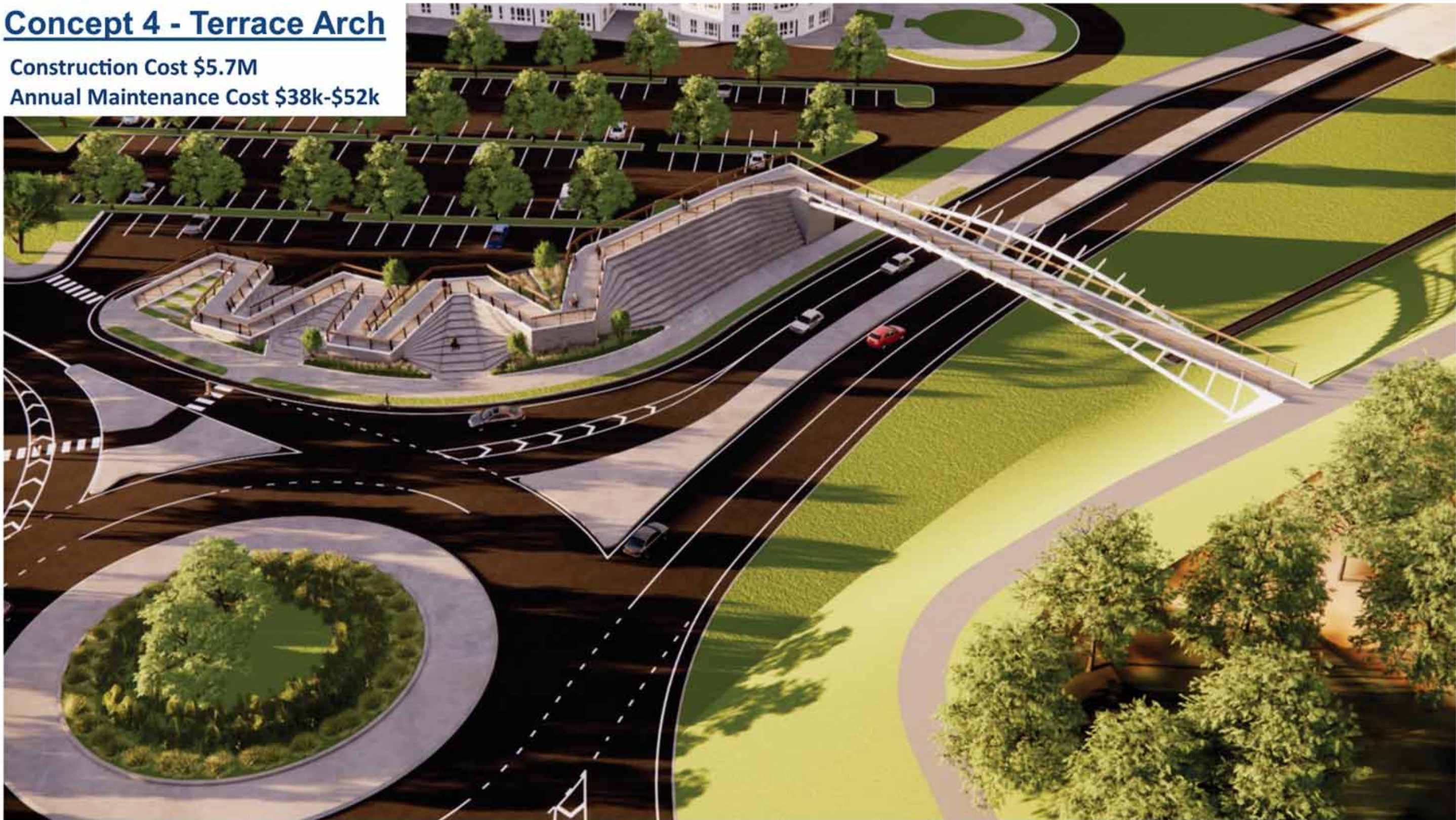
BAYFRONT PARKWAY
CENTRAL CORRIDOR IMPROVEMENTS

CITY OF ERIE, PA

Concept 4 - Terrace Arch

Construction Cost \$5.7M

Annual Maintenance Cost \$38k-\$52k





Peer Review: Holland Street Pedestrian Bridge

BAYFRONT PARKWAY
CENTRAL CORRIDOR IMPROVEMENTS

CITY OF ERIE, PA

Concept 4 - Terrace Arch

Construction Cost \$5.7M

Annual Maintenance Cost \$38k-\$52k





Peer Review: Holland Street Pedestrian Bridge

BAYFRONT PARKWAY
CENTRAL CORRIDOR IMPROVEMENTS

CITY OF ERIE, PA

Concept 4 - Terrace Arch

Construction Cost \$5.7M

Annual Maintenance Cost \$38k-\$52k





Peer Review: Holland Street Pedestrian Bridge

BAYFRONT PARKWAY
CENTRAL CORRIDOR IMPROVEMENTS

CITY OF ERIE, PA

Concept 5 - Terrace Girder

Construction Cost \$4.0M

Annual Maintenance Cost \$27k-\$36k





Peer Review: Holland Street Pedestrian Bridge

BAYFRONT PARKWAY
CENTRAL CORRIDOR IMPROVEMENTS

CITY OF ERIE, PA

Concept 5 - Terrace Girder

Construction Cost \$4.0M

Annual Maintenance Cost \$27k-\$36k





Peer Review: Holland Street Pedestrian Bridge

BAYFRONT PARKWAY
CENTRAL CORRIDOR IMPROVEMENTS

CITY OF ERIE, PA

Concept 5 - Terrace Girder

Construction Cost \$4.0M

Annual Maintenance Cost \$27k-\$36k





Peer Review: Holland Street Pedestrian Bridge

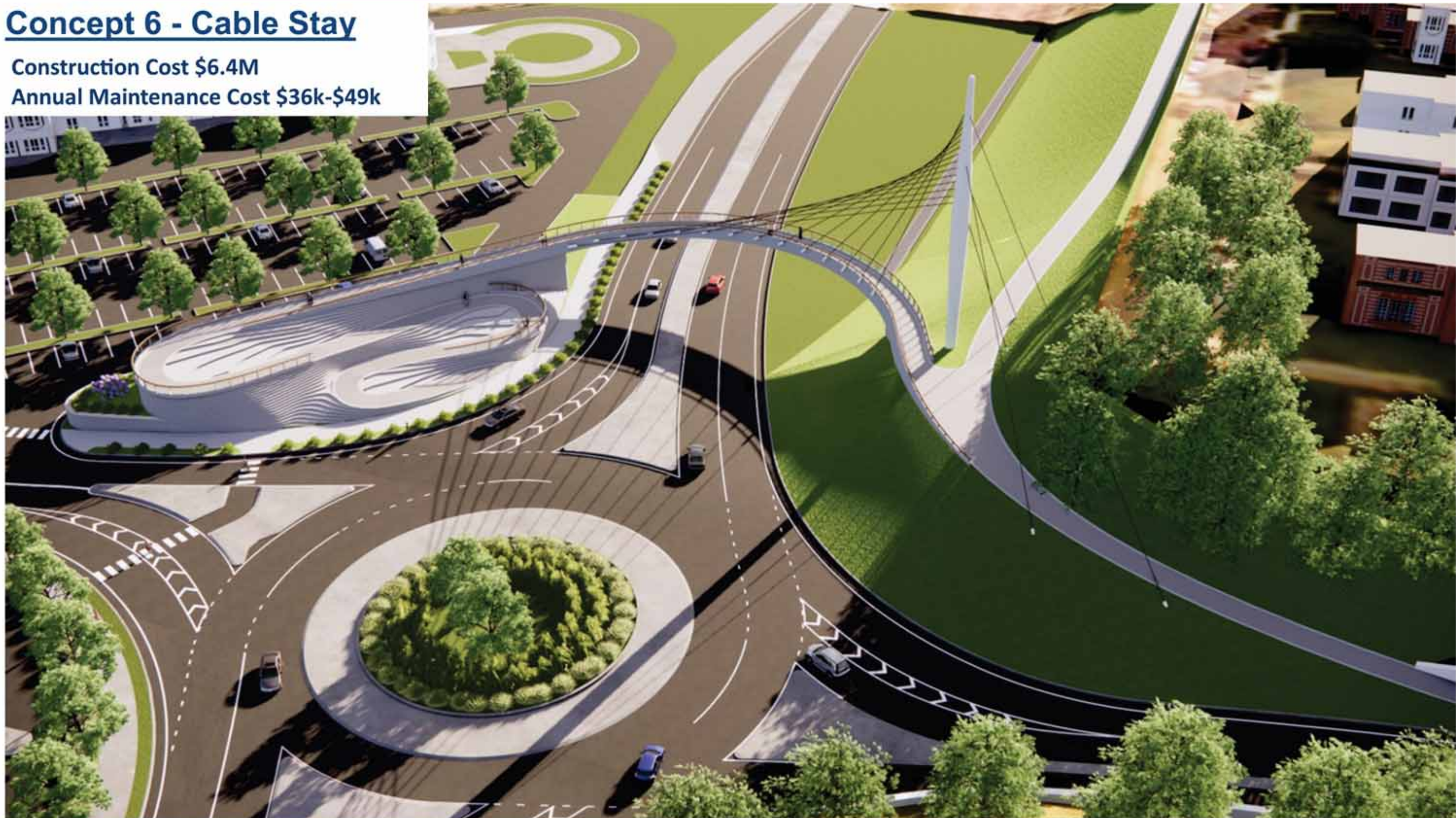
BAYFRONT PARKWAY
CENTRAL CORRIDOR IMPROVEMENTS

CITY OF ERIE, PA

Concept 6 - Cable Stay

Construction Cost \$6.4M

Annual Maintenance Cost \$36k-\$49k





Peer Review: Holland Street Pedestrian Bridge

BAYFRONT PARKWAY
CENTRAL CORRIDOR IMPROVEMENTS

CITY OF ERIE, PA

Concept 6 - Cable Stay

Construction Cost \$6.4M

Annual Maintenance Cost \$36k-\$49k





Peer Review: Holland Street Pedestrian Bridge

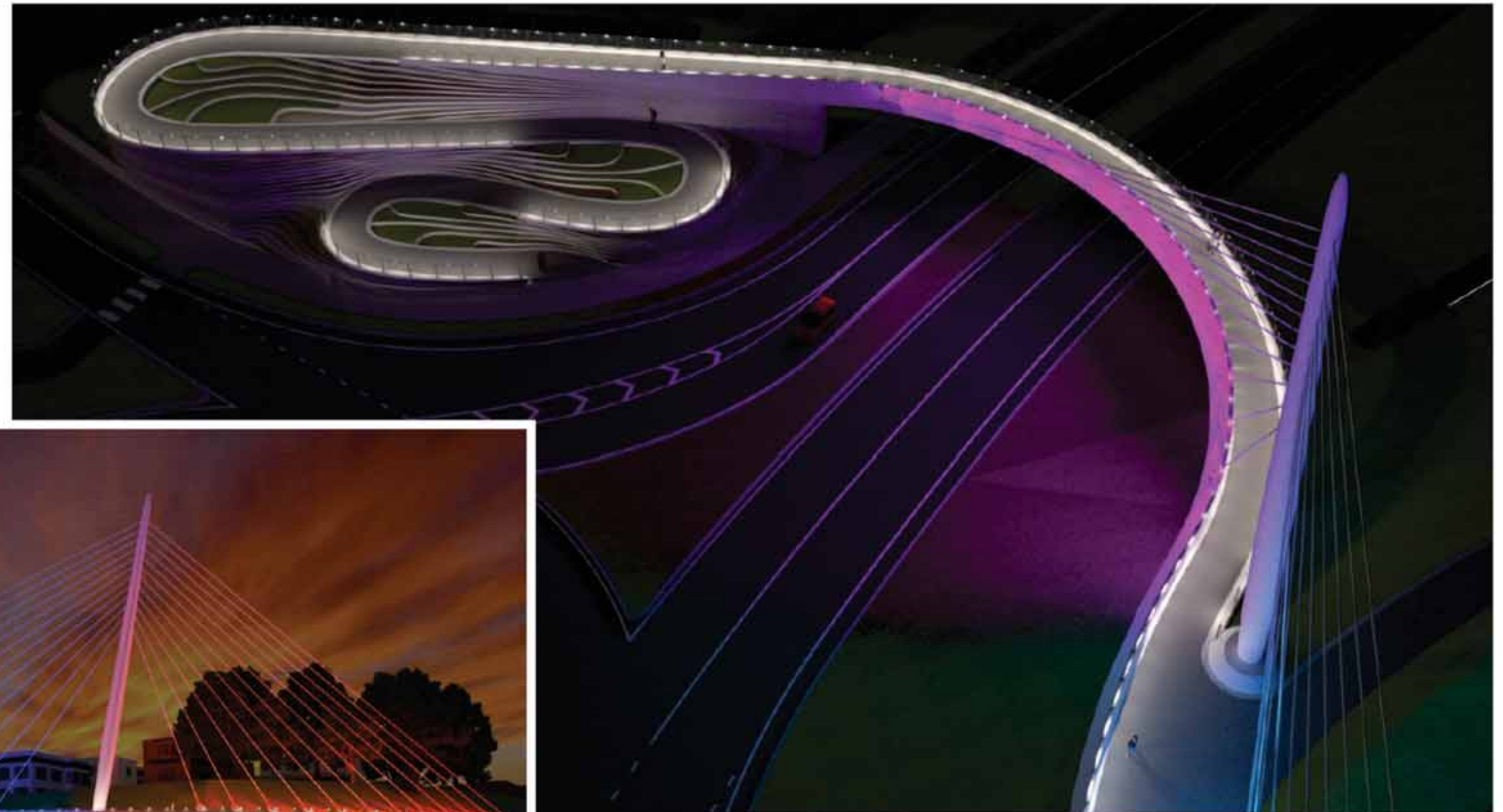
BAYFRONT PARKWAY
CENTRAL CORRIDOR IMPROVEMENTS

CITY OF ERIE, PA

Concept 6 - Cable Stay

Construction Cost \$6.4M

Annual Maintenance Cost \$36k-\$49k





Retaining Wall Aesthetics

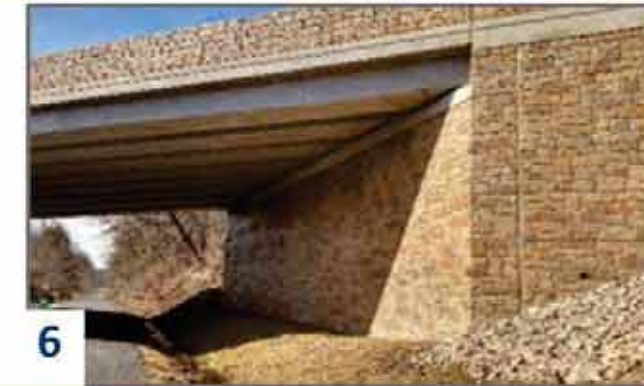
BAYFRONT PARKWAY
CENTRAL CORRIDOR IMPROVEMENTS

CITY OF ERIE, PA

MURAL & PAINTING



CONCRETE FORM LINER



LIGHTING



LANDSCAPE & SCREEN





Environmental Oversight

- PA Department of Environmental Protection (PADEP)
- US Army Corps of Engineers (USACE)
- Erie County Conservation District (ECCD)



Environmental Protections — During Construction

- Erosion and sediment pollution control devices will be installed to prevent sediment from disturbed areas during construction from contaminating neighboring land and waterways.
- Anticipated facilities include but are not limited to: rock construction entrances, compost filter socks, inlet filter bags and rock outfall protection.

Environmental Protections — After Construction

- The project will not increase stormwater runoff rate and volume and will enhance the water quality prior to discharging into receiving waterways.
- Proposed raingardens and vegetated swales with amended topsoil will detain stormwater, filter contaminants, and promote infiltration before discharging into receiving waterways.



Devices such as compost filter socks are placed during construction to prevent sediment from reaching waterways.



Vegetated swales and raingardens are proposed to offset anticipated stormwater rate and volume increases associated with the project and improve water quality.

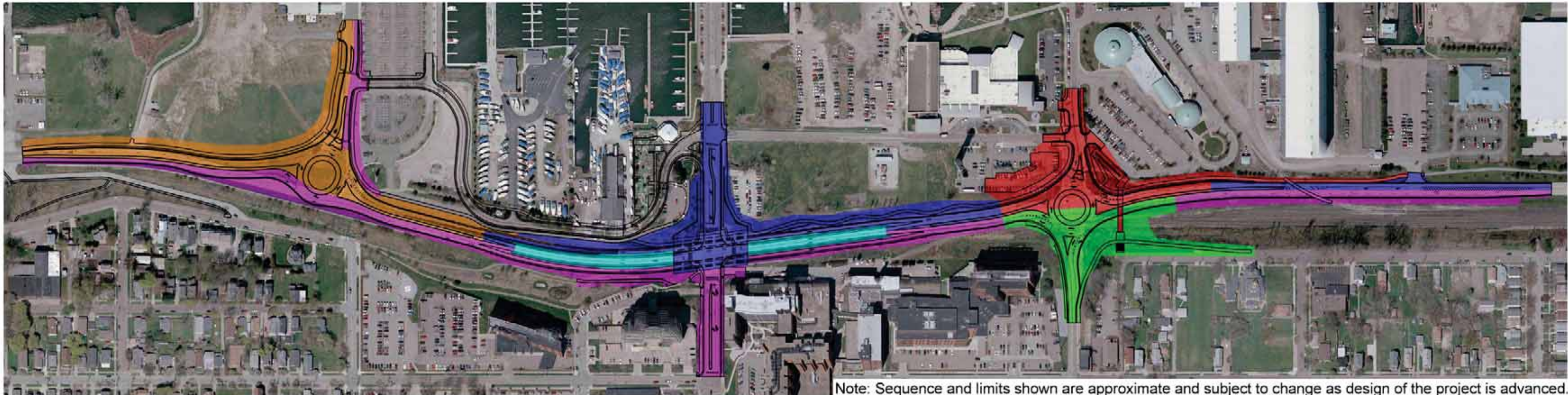




Sequence of Construction

BAYFRONT PARKWAY
CENTRAL CORRIDOR IMPROVEMENTS

CITY OF ERIE, PA



Note: Sequence and limits shown are approximate and subject to change as design of the project is advanced.

Stage 1

- Sassafras Roundabout
- Bayfront Parkway (Westbound)
- Sassafras Street Ext (Southbound)

Stage 2

- Bayfront Parkway (Eastbound)
- Sassafras Street Ext (Northbound)
- State Street (South of Bayfront Parkway)

Stage 3

- State Street Bridge
- State Street (North of Bayfront Parkway)
- Bayfront Parkway (Westbound)

Stage 4

- Holland Roundabout (Southern Half)
- Holland Street (South of Bayfront Parkway)

Stage 5

- Holland Roundabout (Northern Half)
- Holland Street (North of Bayfront Parkway)
- Holland Street Pedestrian Bridge

Stage 6

- Bayfront Parkway Ramps to State Street
- Landscaping
- Miscellaneous Items / Project Cleanup





Project Schedule

BAYFRONT PARKWAY
CENTRAL CORRIDOR IMPROVEMENTS

CITY OF ERIE, PA



NOTE: PROJECT SCHEDULE IS SUBJECT TO CHANGE.





Ancillary Projects

Soldiers' and Sailors' Access Improvements

- ◇ New Bridge over Railroad Tracks to Replace At-Grade Crossing
- ◇ Construction Currently Underway
- ◇ Anticipated Completion in Spring 2022

Railroad Track Modifications (CSX)

- ◇ Rail Yard Modifications and Crossing Upgrades
- ◇ Construction Anticipated in 2022

12th Street Signal Improvements & ITS Signs

- ◇ 22 Traffic Signal Replacements / Modifications from I-79 to East Bayfront Parkway
- ◇ Construction Anticipated in 2022

East Bayfront Parkway Safety Improvements

- ◇ Pedestrian Enhancements and Safety Improvements from Port Access Road / East Bay Drive to 12th Street
- ◇ Construction Anticipated in 2022

West Front Street (Erie Western-PA Port Authority)

- ◇ Roadway Reconstruction Between Sassafras and State Streets
- ◇ Construction Anticipated in 2022



Construction of a new bridge over the railroad tracks is underway at the Soldiers' & Sailors' Home.



The 12th Street Signals Project also includes ITS signs on I-79 and the East Bayfront Parkway to provide real-time traffic information and weather conditions to motorists entering the City.





Thanks for Participating!

BAYFRONT PARKWAY
CENTRAL CORRIDOR IMPROVEMENTS

CITY OF ERIE, PA

Please complete the online survey and provide your feedback:

www.BayfrontParkwayProject.com

You can also contact the PennDOT Project Manager:

Thomas McClelland, PE
PennDOT District 1-0
thmcclella@pa.gov
814-678-7081

www.BayfrontParkwayProject.com

SEPTEMBER 14, 2021

