

SassafRAS St Ext

State St

Holland St

Bayfront Parkway

SASSAFRAS STREET SIDEWALK IMPROVEMENTS BY OTHERS

WEST FRONT STREET RECONSTRUCTION BY OTHERS

Bayfront Parkway

SassafRAS Street Extension

Holland Street

State Street

State St


Holland St




Bayfront Parkway Improvements
 PennDOT District 1-0
 August 2022

CONNECTING ERIE'S WATERFRONT
 PHASE 1

OVERALL CORRIDOR
 IMPROVEMENTS
 INDEX

 pennsylvania
 DEPARTMENT OF TRANSPORTATION

 ms consultants, inc.
 engineers, architects, planners

Raymond M Blasco, MD
Memorial Library

Erie Intermodal
Transportation Center

Donjon
Shipbuilding And Repair

DaVita
Erie Dialysis

Greyhound
Bus Station

Holland St

E Front St

Bayfront Parkway

E Front St

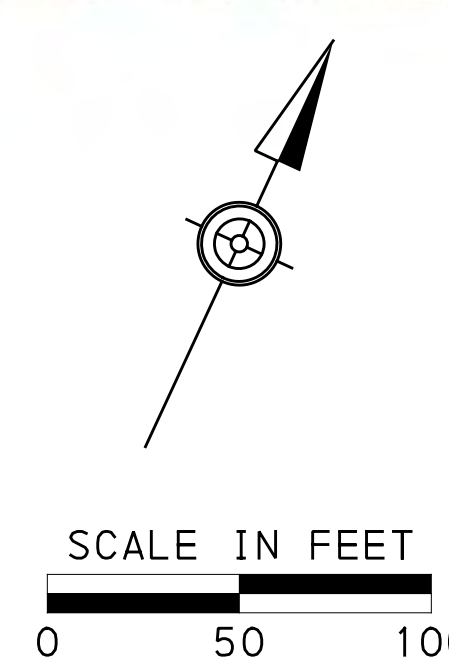
UPMC Hamot

Holland St

E 2nd St

LEGEND

- PROPOSED ROADWAY PAVING
- PROPOSED ROADWAY SHOULDER
- PROPOSED CONCRETE SIDEWALK
- PROPOSED CONCRETE CURB GUTTER / ISLAND
- PROPOSED CONCRETE BARRIER / RETAINING WALL
- PROPOSED TRUCK APRON
- PROPOSED DRIVEWAY ADJUSTMENT
- PROPOSED LANDSCAPED AREA
- PROPOSED PEDESTRIAN BRIDGE
- EXISTING SIDEWALK & BICYCLE PATH
- EXISTING AT-GRADE RAILROAD CROSSING



Bayfront Parkway Improvements
PennDOT District 1-0
 August 2022
CONNECTING ERIE'S WATERFRONT
PHASE 1

HOLLAND STREET
IMPROVEMENTS

**Bayfront Parkway Improvements
PennDOT District 1-0
August 2022
HOLLAND STREET
INTERSECTION**



LOOKING WEST TOWARDS STATE STREET



LOOKING EAST TOWARDS HOLLAND PEDESTRIAN BRIDGE



LOOKING WEST TOWARDS UPMC HAMOT HOSPITAL & STATE STREET



LOOKING EAST TOWARDS HOLLAND PEDESTRIAN BRIDGE

Bayfront Parkway Improvements

PennDOT District 1-0

August 2022

**HOLLAND STREET
PEDESTRIAN BRIDGE**

North Approach



South Approach



Scan the above QR codes with your smartphone for a virtual experience.



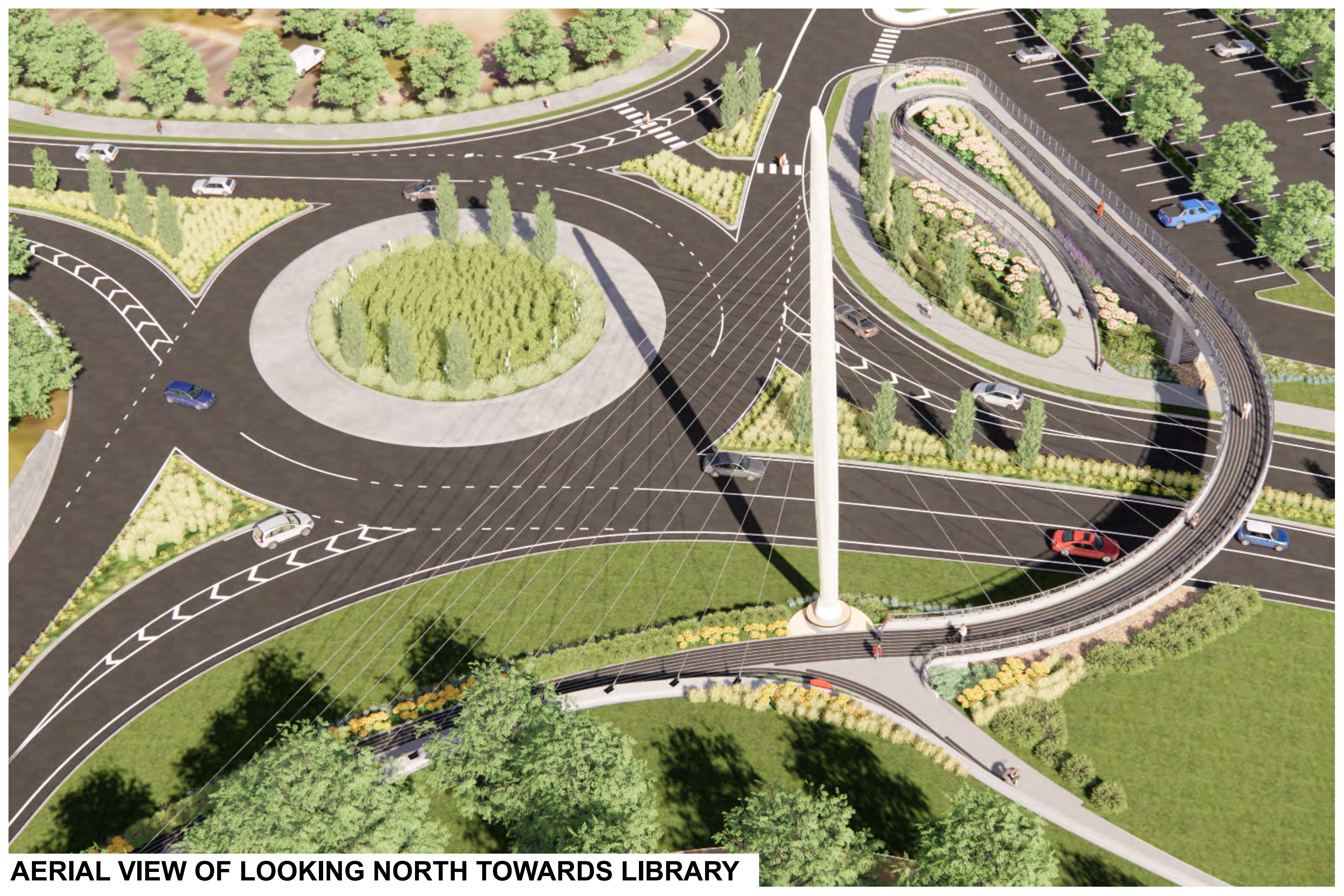
LOOKING WEST TOWARDS LIBRARY



LOOKING SOUTHWEST TOWARDS UPMC HAMOT HOSPITAL



LOOKING NORTHEAST TOWARDS ERIE INTERMODAL TRANSPORTATION CENTER



AERIAL VIEW OF LOOKING NORTH TOWARDS LIBRARY

**Bayfront Parkway Improvements
PennDOT District 1-0
August 2022
HOLLAND STREET
PEDESTRIAN BRIDGE**



Scan the above QR codes with your smartphone for a virtual experience.



LOOKING SOUTH FROM PEDESTRIAN BRIDGE RAMP



LOOKING SOUTH FROM LIBRARY



LOOKING SOUTH TOWARDS UPMC HAMOT HOSPITAL



LOOKING NORTH TOWARDS ERIE INTERMODAL TRANSPORTATION CENTER

Presque Isle Yacht Club

Wolverine Park Marina

Erie Maritime Museum

Harbor Place Development

WEST FRONT STREET IMPROVEMENTS BY OTHERS

Grade Separated Intersection (Bayfront Parkway Through Traffic Passes Below State Street)

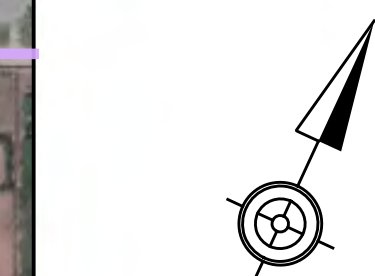
UPMC Hamot

100 Peach Street

100 State Street

LEGEND

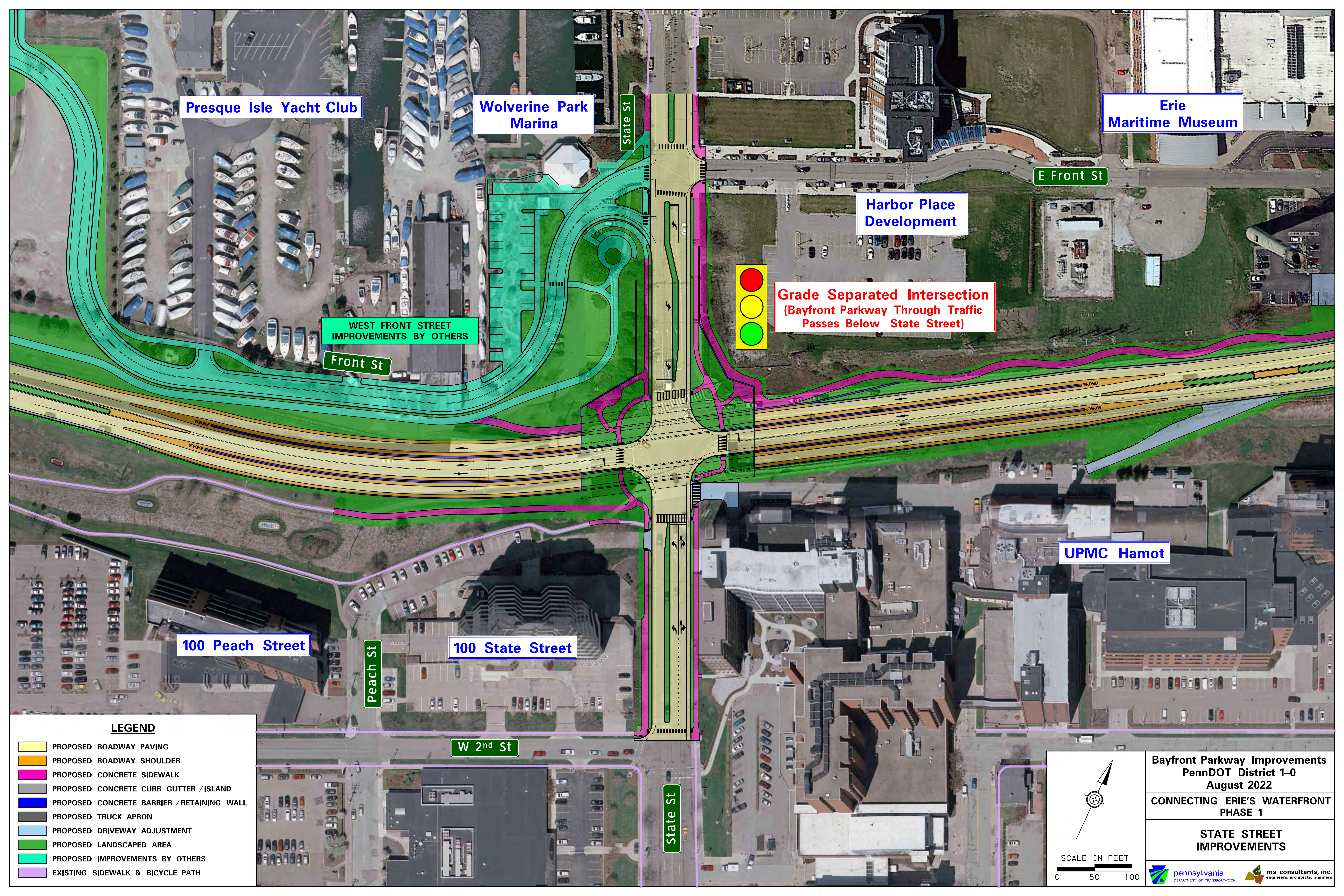
- PROPOSED ROADWAY PAVING
- PROPOSED ROADWAY SHOULDER
- PROPOSED CONCRETE SIDEWALK
- PROPOSED CONCRETE CURB GUTTER / ISLAND
- PROPOSED CONCRETE BARRIER / RETAINING WALL
- PROPOSED TRUCK APRON
- PROPOSED DRIVEWAY ADJUSTMENT
- PROPOSED LANDSCAPED AREA
- PROPOSED IMPROVEMENTS BY OTHERS
- EXISTING SIDEWALK & BICYCLE PATH



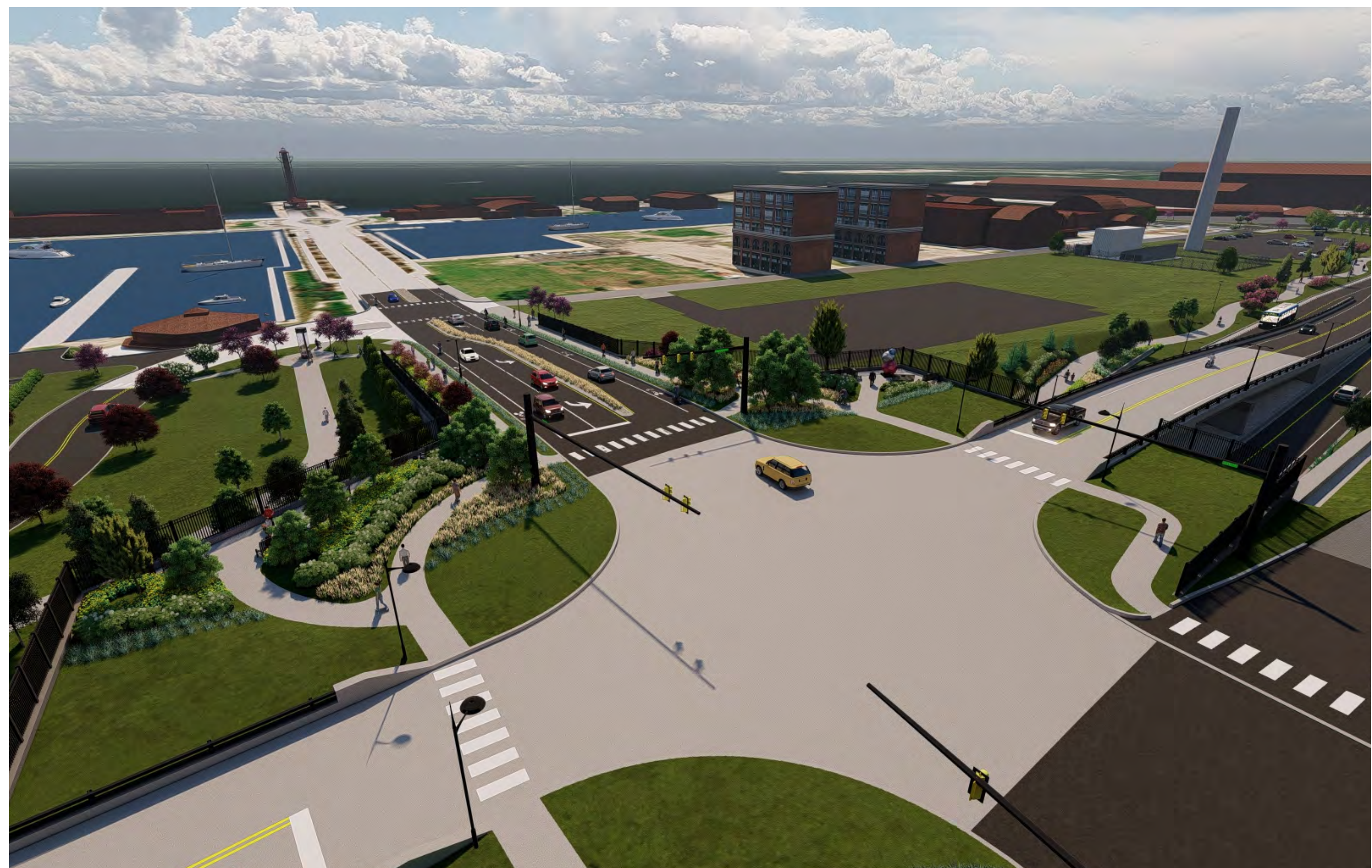
SCALE IN FEET
0 50 100

Bayfront Parkway Improvements
PennDOT District 1-0
August 2022
CONNECTING ERIE'S WATERFRONT
PHASE 1

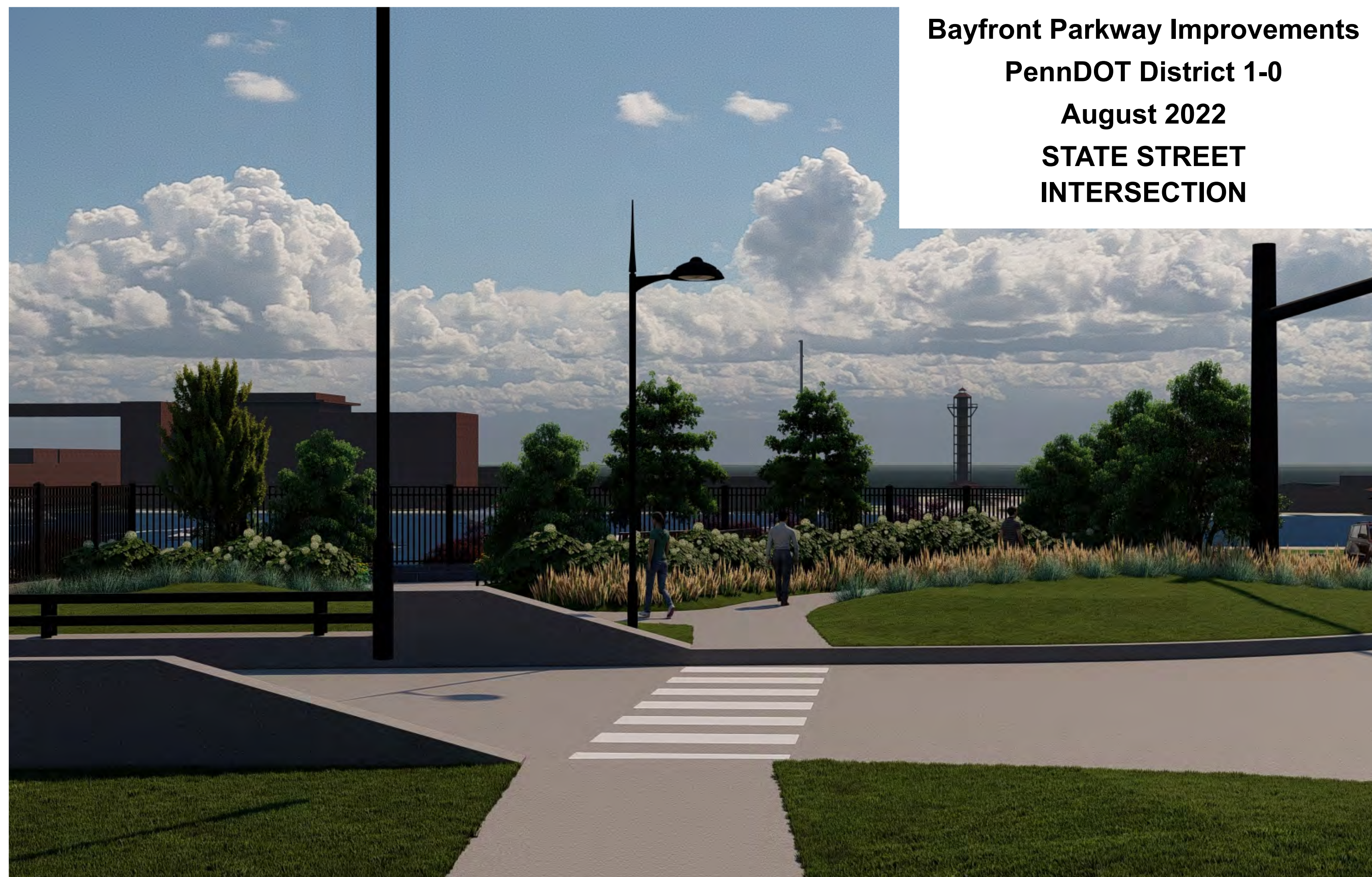
STATE STREET
IMPROVEMENTS



**Bayfront Parkway Improvements
PennDOT District 1-0
August 2022
STATE STREET
INTERSECTION**



LOOKING NORTH TOWARDS DOBBINS LANDING



LOOKING NORTH ACROSS BAYFRONT PARKWAY TOWARDS DOBBINS LANDING



LOOKING EAST ACROSS STATE STREET TOWARDS HOLLAND STREET



LOOKING EAST FROM BAYFRONT BIKEWAY TOWARDS STATE STREET BRIDGE

Bayfront Parkway Improvements
PennDOT District 1-0
August 2022
STATE STREET
INTERSECTION



LOOKING SOUTH TOWARDS UPMC HAMOT HOSPITAL & 100 STATE STREET OFFICE BUILDING



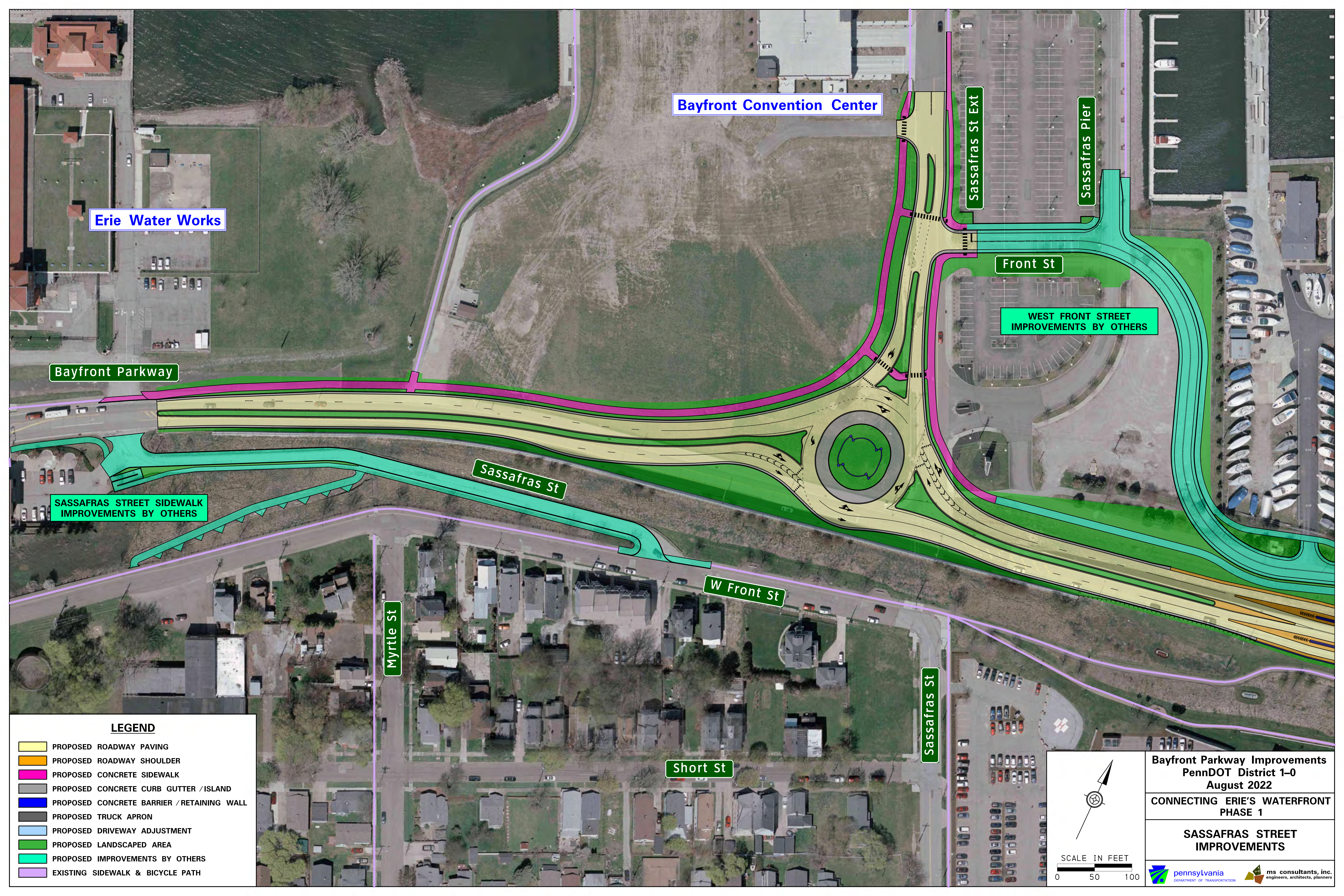
LOOKING NORTH FROM BAYFRONT BIKEWAY



LOOKING WEST FROM BAYFRONT BIKEWAY



LOOKING EAST FROM BAYFRONT BIKEWAY



Erie Water Works

Bayfront Convention Center

Sassafras St Ext

Sassafras Pier

Front St

WEST FRONT STREET IMPROVEMENTS BY OTHERS

Bayfront Parkway

Sassafras St

SASSAFRAS STREET SIDEWALK IMPROVEMENTS BY OTHERS

W Front St

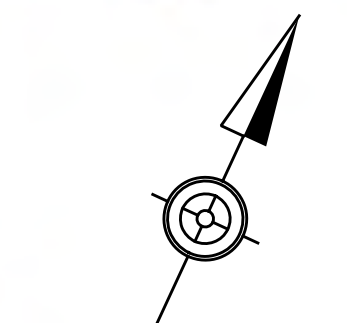
Myrtle St

Sassafras St

Short St

LEGEND

- PROPOSED ROADWAY PAVING
- PROPOSED ROADWAY SHOULDER
- PROPOSED CONCRETE SIDEWALK
- PROPOSED CONCRETE CURB GUTTER / ISLAND
- PROPOSED CONCRETE BARRIER / RETAINING WALL
- PROPOSED TRUCK APRON
- PROPOSED DRIVEWAY ADJUSTMENT
- PROPOSED LANDSCAPED AREA
- PROPOSED IMPROVEMENTS BY OTHERS
- EXISTING SIDEWALK & BICYCLE PATH



SCALE IN FEET
0 50 100

Bayfront Parkway Improvements
PennDOT District 1-0
August 2022
CONNECTING ERIE'S WATERFRONT
PHASE 1

SASSAFRAS STREET
IMPROVEMENTS



Bayfront Parkway Improvements
PennDOT District 1-0
August 2022
SASSAFRAS STREET
INTERSECTION



LOOKING SOUTHEAST TOWARDS STATE STREET



LOOKING WEST TOWARDS ERIE WATER WORKS



LOOKING SOUTH TOWARDS RESIDENTIAL BLUFF



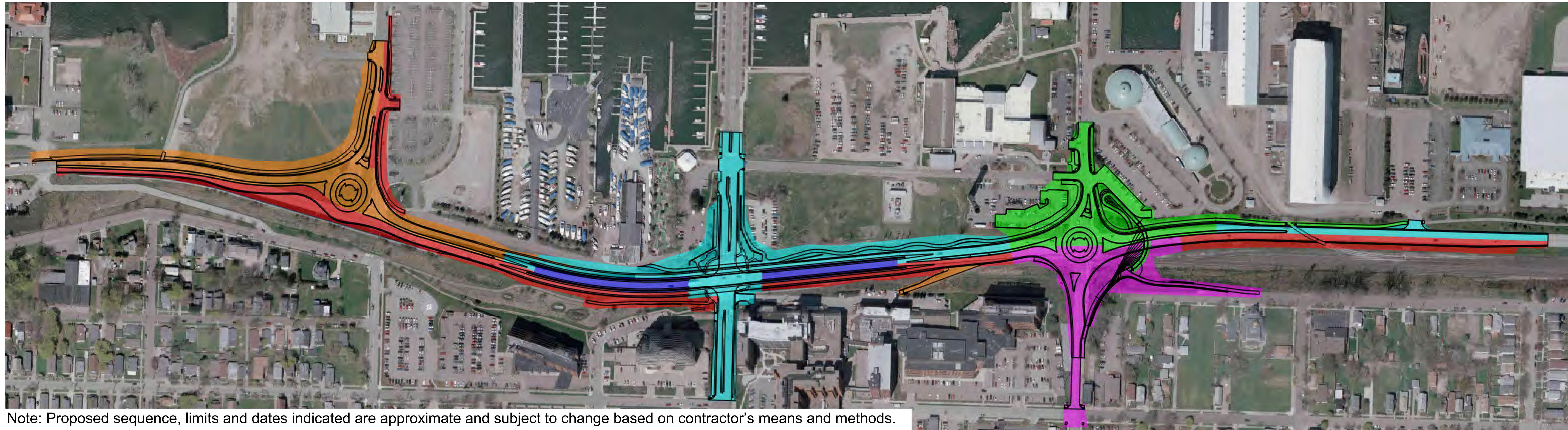
LOOKING EAST TOWARDS STATE STREET



Proposed Sequence of Construction

BAYFRONT PARKWAY CENTRAL CORRIDOR IMPROVEMENTS

CITY OF ERIE, PA



Stage 1 Nov 2022—Aug 2023
Sassafras Roundabout
Bayfront Parkway (Westbound)
Sassafras Street Ext (Southbound)

Stage 2 Aug 2023—Apr 2024
Bayfront Parkway (Eastbound)
Sassafras Street Ext (Northbound)

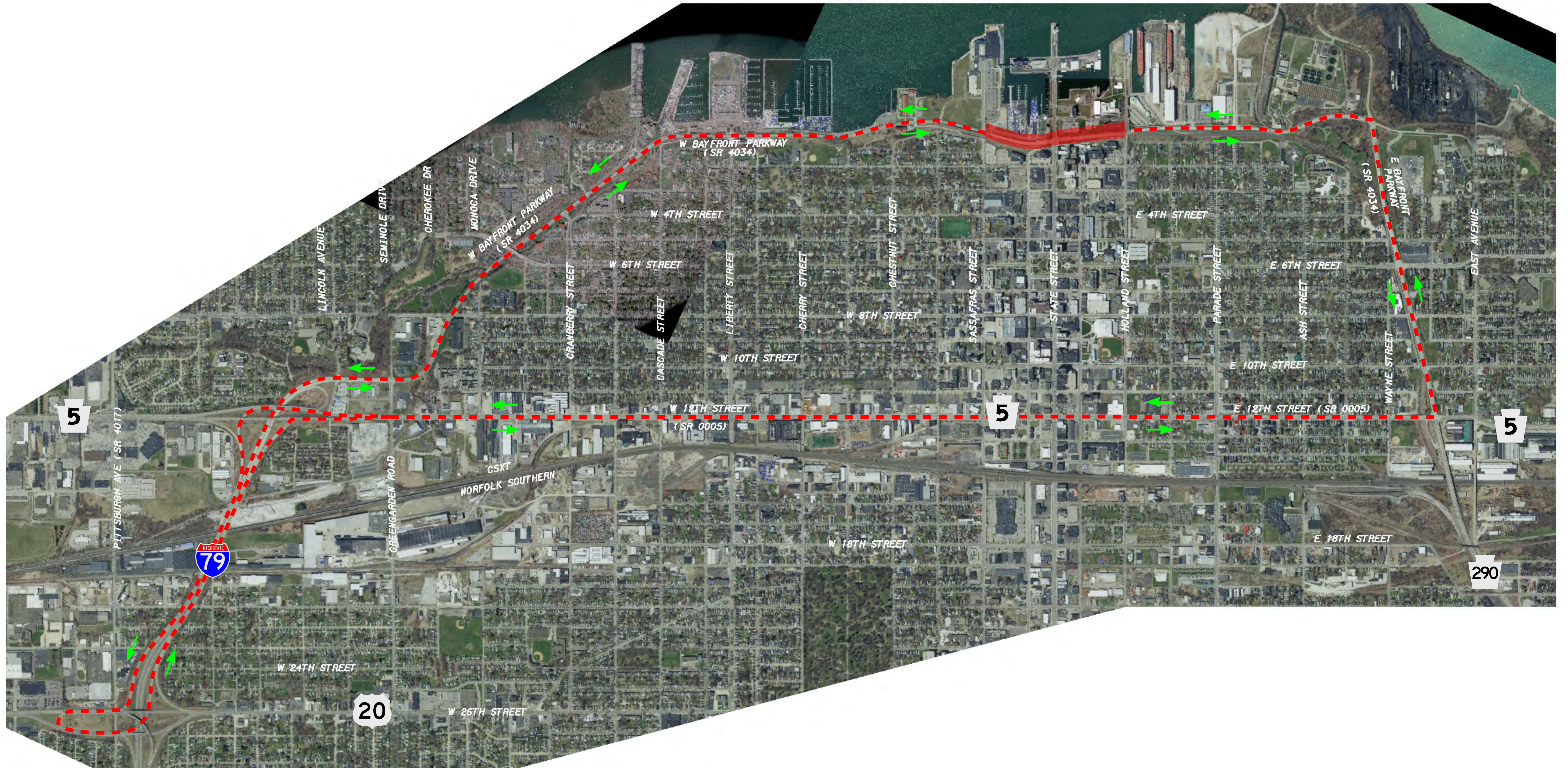
Stage 3 Apr 2024—Mar 2025
State Street Bridge
State Street (North/South of Bayfront Parkway)
Bayfront Parkway (Westbound)

Stage 4 Mar 2025—June 2025
Holland Roundabout (Southern Half)
Holland Street (South of Bayfront Parkway)
Begin Ramps to State Street




Stage 5 June 2025—Oct 2025
Holland Roundabout (Northern Half)
Holland Street (North of Bayfront Parkway)
Holland Street Pedestrian Bridge

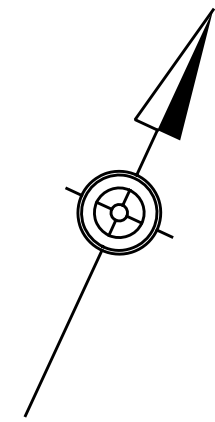



Stage 6 Oct 2025—Nov 2025
Complete Ramps to State Street
Landscaping
Miscellaneous Items / Project Cleanup

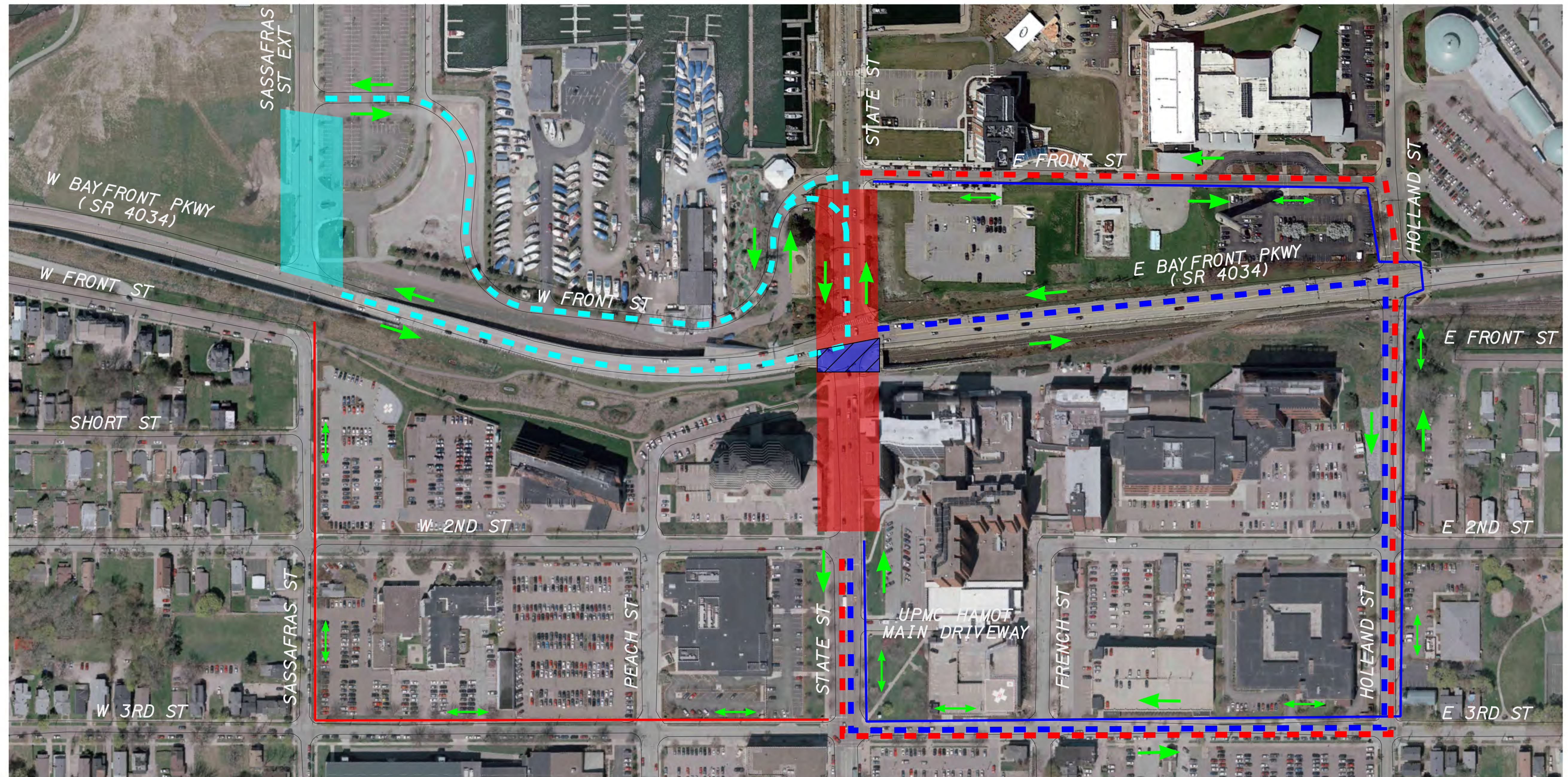




LEGEND

-  VEHICLE DETOUR ROUTE
-  TRAFFIC FLOW ARROW
-  WORK AREA

 	Bayfront Parkway Improvements PennDOT District 1-0 August 2022
	STAGE 3
	BAYFRONT PARKWAY (SR 4034) WEEKEND DETOUR
 	

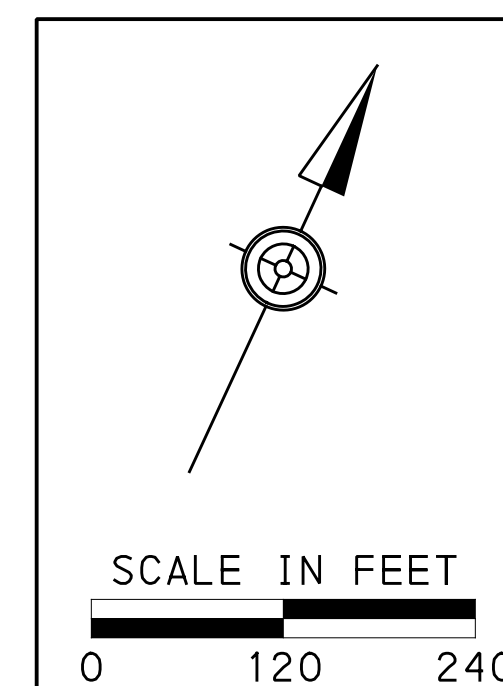


LEGEND

- - - - - STAGE 1 SASSAFRAS STREET EXT VEHICLE DETOUR ROUTE (0.6 MILES)
- - - - - STAGE 2 STATE STREET VEHICLE DETOUR ROUTE (0.66 MILES)
- - - - - STAGE 3 STATE STREET VEHICLE DETOUR ROUTE (0.72 MILES)
- STAGES 2 AND 3 STATE STREET PEDESTRIAN DETOUR ROUTE
- STAGES 2 AND 3 BAYFRONT PROMENADE PEDESTRIAN DETOUR
- ↔ DETOURED PEDESTRIAN FLOW
- ➔ TRAFFIC FLOW ARROW
-
 STAGE 1 WORK AREA
-
 STAGES 2 AND 3 WORK AREA
-
 STAGE 3 WORK AREA

NOTES:

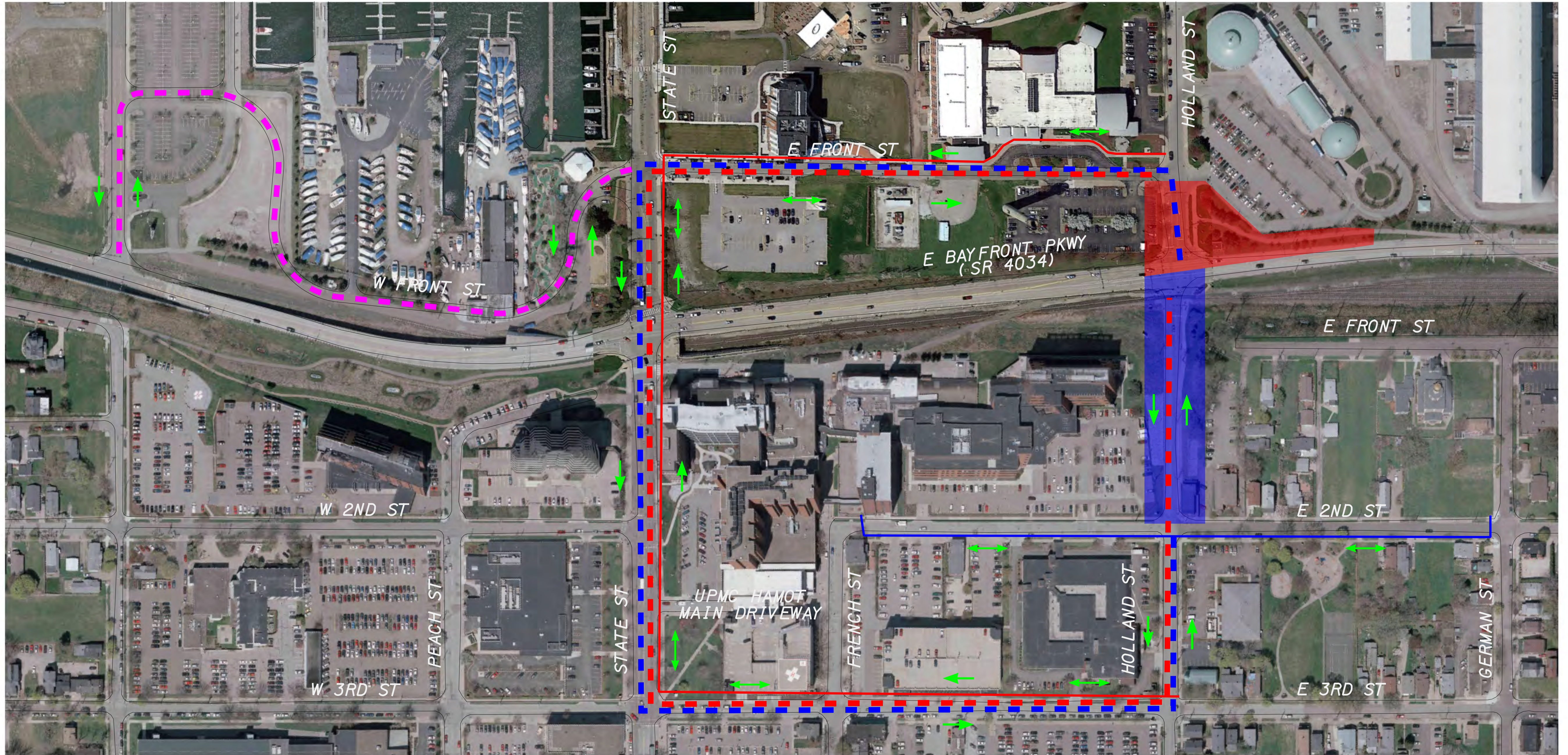
1. STAGE 1 DURATION 2 WEEKS.



**Bayfront Parkway Improvements
PennDOT District 1-0
August 2022**

STAGES 1, 2 & 3

CITY STREET DETOUR ROUTES

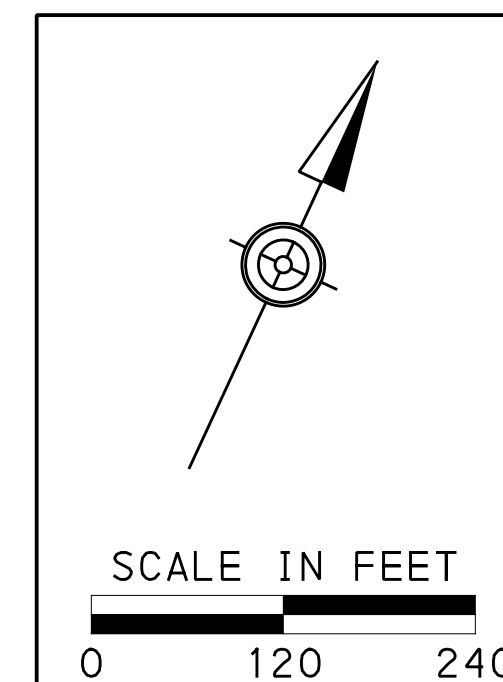


LEGEND

- ▬▬▬▬ STAGE 4 HOLLAND STREET VEHICLE DETOUR ROUTE (0.77 MILES)
- ▬▬▬▬ STAGE 5 HOLLAND STREET VEHICLE DETOUR ROUTE (0.79 MILES)
- ▬▬▬▬ STAGES 4, 5 & 6 RESTRICTED ACCESS DETOUR ROUTE
- ▬▬▬▬ STAGES 4 AND 5 HOLLAND PEDESTRIAN DETOUR ROUTE
- ▬▬▬▬ STAGE 4 EAST 2ND STREET PEDESTRIAN DETOUR ROUTE
- ↔ DETOURED PEDESTRIAN FLOW
- ➔ TRAFFIC FLOW ARROW
- STAGE 4 WORK AREA
- STAGE 5 WORK AREA

NOTES:

1. DURING STAGES 4 AND 5, STATE STREET IS GRADE SEPARATED FROM BAYFRONT PARKWAY WITH NO ACCESS.



<p>Bayfront Parkway Improvements PennDOT District 1-0 August 2022</p>
<p>STAGES 4, 5 & 6</p>
<p>CITY STREET DETOUR ROUTES</p>



Mitigation Commitments

Environmental Oversight

- PA Department of Environmental Protection (PADEP)
- US Army Corps of Engineers (USACE)
- Erie County Conservation District (ECCD)

Environmental Permits Obtained

- Individual National Pollutant Discharge Elimination System (NPDES) Permit
- General Permit GP-7 for Minor Wetland Impacts

Mitigation and Permit Commitments Pre- and Post-Construction

- Erosion and sediment pollution control devices will prevent sediment from contaminating neighboring land and waterways.
- Anticipated facilities include: rock construction entrances, compost filter socks, inlet filter bags and rock outfall protection.
- The project will not increase stormwater runoff rate and volume and will enhance water quality.
- Proposed raingardens and vegetated swales will detain stormwater, filter contaminants, and promote infiltration.



Devices such as compost filter socks are placed during construction to prevent sediment from reaching waterways.



Vegetated swales and raingardens are proposed to offset anticipated stormwater rate and volume increases associated with the project and improve water quality.





Ancillary Projects

Soldiers' and Sailors' Access Improvements

- ◇ New Bridge over Railroad Tracks Replaced At-Grade Crossing
 - ◇ Construction Completed in Spring 2022

12th Street Signal Improvements & ITS Signs

- ◇ 22 Traffic Signal Replacements / Modifications from I-79 to East Bayfront Parkway
 - ◇ Construction Currently Underway

East Bayfront Parkway Safety Improvements

- ◇ Pedestrian Enhancements and Safety Improvements from Port Access Road / East Bay Drive to 12th Street
 - ◇ Construction Anticipated in 2024

West Front Street (Erie-Western PA Port Authority)

- ◇ Roadway Reconstruction Between Sassafras and State Streets
 - ◇ Construction Completion Anticipated Spring 2023

Sassafras Street Sidewalk Improvements (Erie-Western PA Port Authority)

- ◇ Sidewalk Construction and Roadway Improvements Located Between Bayfront Parkway and West Front Street
 - ◇ Construction Completion Anticipated Spring 2023

